



Cadillac



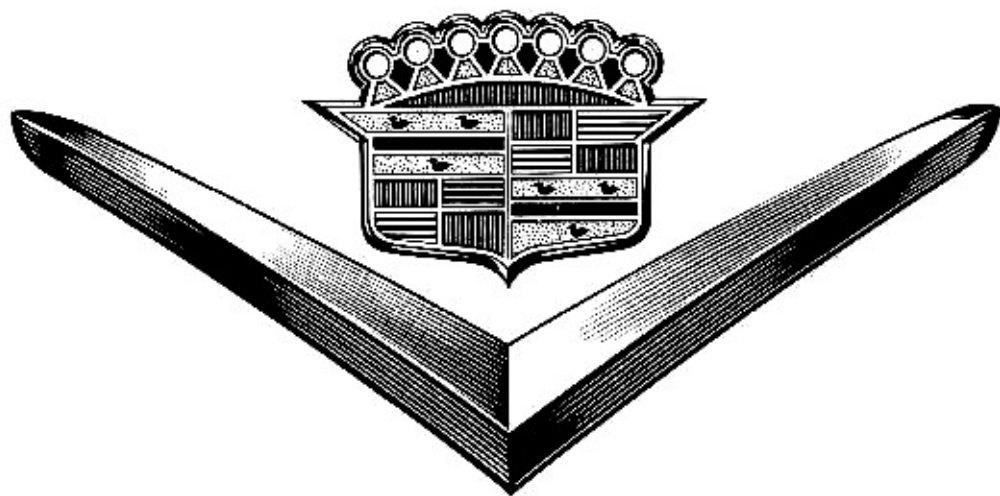
SHOP MANUAL

1954

CADILLAC SHOP MANUAL

For 1954

Covering Cadillac 54-62, 60S, 75 Passenger Cars,
and 86 Commercial Cars



Service Department
CADILLAC MOTOR CAR DIVISION
General Motors Corporation
Detroit, Michigan

Copyright 1954
Cadillac Motor Car Division
General Motors Corporation

Price \$2.00
Printed in U.S.A.
19M-4-54

CONTENTS

SECTION NAME	Section No.
General Information	1
Lubrication	2
Body	3
Chassis Sheet Metal	4
Frame	5
Chassis Suspension	6
Steering	7
Rear Axle	8
Brakes	9
Engine Mechanical	10
Engine Electrical	11
Engine Fuel and Exhaust	12
Engine Cooling	13
Hydra-Matic Transmission	14
Chassis Electrical	15
Accessories	16



Cadillac Craftsman Code

I HEREBY pledge myself in all my work on Cadillac cars, to be thorough and exact in diagnosing trouble; to recommend only that service which is to the best interest of the owner; to perform that work for which I am responsible in accordance with Cadillac standards to the best of my ability, and in all my dealings with Cadillac owners, to be courteous, honest, and ethical; and to do everything within my power to further the owner's satisfaction and promote his good will to Cadillac and to my dealer.

GENERAL INFORMATION

Foreword

This 1954 Shop Manual has been prepared by the Cadillac Motor Car Division to aid Servicemen to render complete and accurate service for owners of 1954 Cadillac cars.

This manual is intended primarily for Servicemen who are familiar with Cadillac cars of previous years. The information contained herein includes the latest service procedures and specifications relative to the 1954 models.

The Cadillac Service Department also publishes the CADILLAC SERVICEMAN each month to keep Servicemen up-to-date on the latest service information. Read the SHOP MANUAL . . . Read the SERVICEMAN . . . Enroll in the CRAFTSMAN'S LEAGUE . . . They will help you understand your job better. They will show you various short cuts and new tools for the performance of special operations.

Arrangement of the Manual

The front page of this 1954 Shop Manual contains a rapid reference Section Index with corresponding page tabs at the beginning of each section. Each section contains a table of contents of notes within the section, a brief descriptive introduction, service adjustment and replacement procedures, diagnosis charts, concise notes, and clearly labeled illustrations. In addition, a list of the Special Tools required to perform the operations and adjustments discussed in each section, and illustrations of these tools, is provided at the end of each section, along with specification and torque tightness information.

On the final page of most sections, space is provided for personal notes and references. Here, articles from the CADILLAC SERVICEMAN should

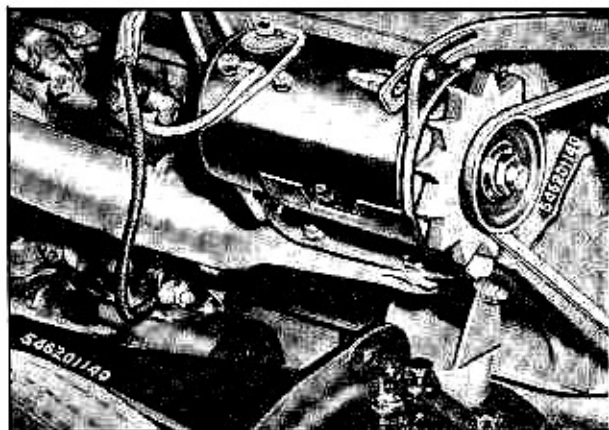


Fig. 1-1 Engine Serial Number Locations

be listed along with other notes and bulletins which pertain to the material in that section.

Identification

Each Cadillac car or chassis, when shipped, carries an engine serial number and an engine unit number. The engine serial number is used in license and insurance applications and in general reference to the car. The serial number, on all 1954 Cadillac engines, is stamped on the flat machined boss cast on the upper right hand corner on the front face of the right hand cylinder block, and is at right angles to the crankshaft, the numbers starting from the bottom. Fig. 1-1. This number is also stamped on the frame right hand side bar at the rear of the engine mounting bracket, Fig. 1-1, and on a lubrication plate attached to the left front body pillar. On coupe styles this lubrication plate is located on the left door lock pillar.

The engine serial number has at least nine digits. The first two indicate the model year, the third and fourth the series, and the last six indicate the order in which the car was completed in final assembly and is commonly referred to as the "Broadcast Number" of the car.

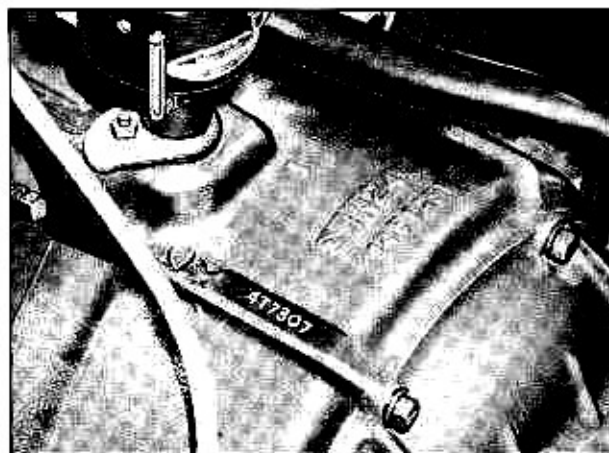


Fig. 1-2 Engine Unit Number Location

The engine unit number on all engines is stamped on the bell housing portion of the crank case behind the left hand cylinder block, directly above the cast rib, and numbered parallel with the crankshaft, the number starting from the cylinder block end of the housing, Fig. 1-2. The letters L.C. are added to the engine unit number on all engines built to low compression specifications. Engines assembled with

GENERAL INFORMATION

.010" oversized pistons may be identified by an asterisk stamped on the block ahead of the engine unit number.

ENGINE UNIT NUMBER CHART

Series	Engine Unit No.
54-62-60-75 Power Steering	4-T 00001
54-62-60-75 Power Steering and Air Conditioning	4-TK 00001
54-86 Less Power Steering and Air Conditioning	7-T 00001
54-86 Air Conditioning	7-TK 00001
54-86 Power Steering	5-T 00001
54-86 Power Steering and Air Conditioning	5-TK 00001

The body style number, body number, and paint and trim numbers are stamped on a plate attached to the right side of the cowl under the hood near the hood hinge, Fig. 1-3.

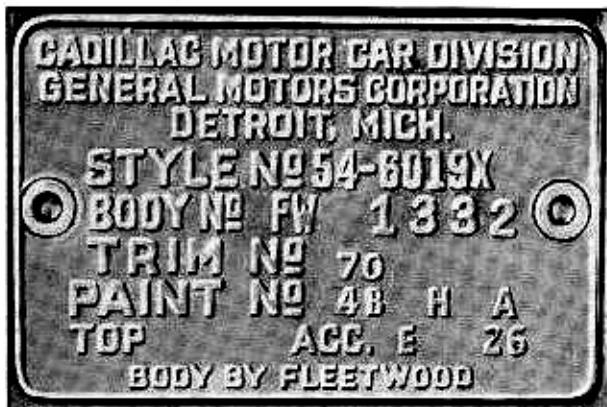


Fig. 1-3 Body Name Plate Location

The Hydra-Matic transmission also has a unit number stamped on a plate located on the right side of the transmission case, Fig. 1-4.

The gear ratio of the differential assembly may be identified by a number stamped on a flat boss on the bottom of the case, Fig. 1-5.

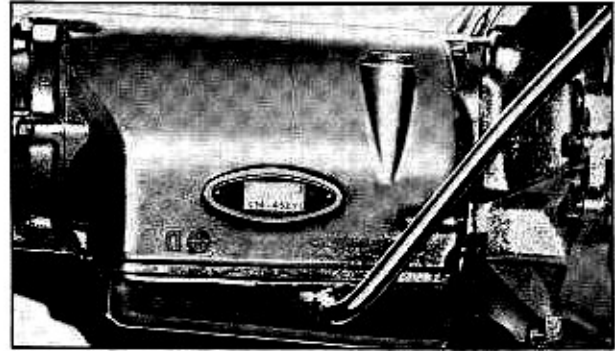


Fig. 1-4 Hydra-Matic Transmission Serial Number Location

Rear axle gear ratio applications in the various series Cadillacs and the identifying number on the rear axle case are listed below:

Series	Ratio	Ident. No.
60, 62	3.07	3
60, 62 (optional)	3.36	6
60, 62 with Air Conditioner	3.36	6
75	3.77	7
86	4.27	4



Fig. 1-5 Rear Axle Gear Ratio Identification Number

GENERAL INFORMATION

The three major components of the Air Conditioner unit, the compressor, condenser, and evaporator, each has a separate serial plate. The serial number plate for the compressor is located on the upper portion of the compressor housing between the high and low test gage connections, Fig. 1-6. The serial number plate for the condenser is located on the liquid outlet end of the condenser assembly, Fig. 1-7. The serial number plate for the evaporator is located on the top right hand end of the evaporator housing, Fig. 1-8,

The radio serial number plate is located on the bottom of the radio unit and to the left, Fig. 1-9.

The Autronic-Eye serial number plate is located on the bottom of the Photo tube unit (mounted on the left side of the instrument panel) near the top of the Photo tube mounting bracket, Fig. 1-10.

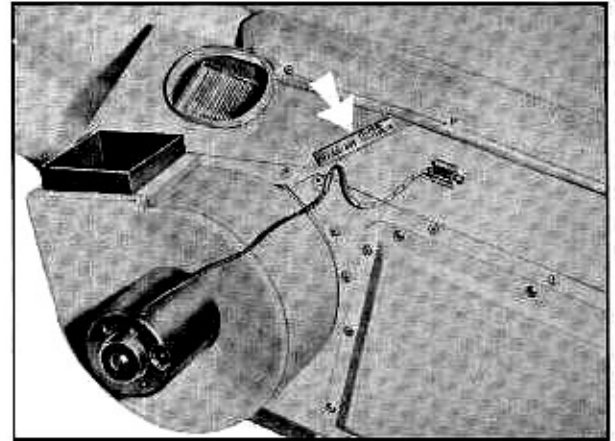


Fig. 1-8 Air Conditioner Evaporator Serial Number Location

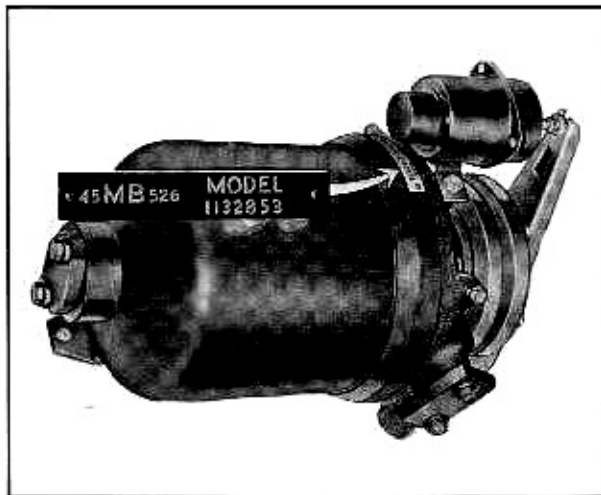


Fig. 1-6 Air Conditioner Compressor Serial Number Location



Fig. 1-9 Radio Serial Number Location

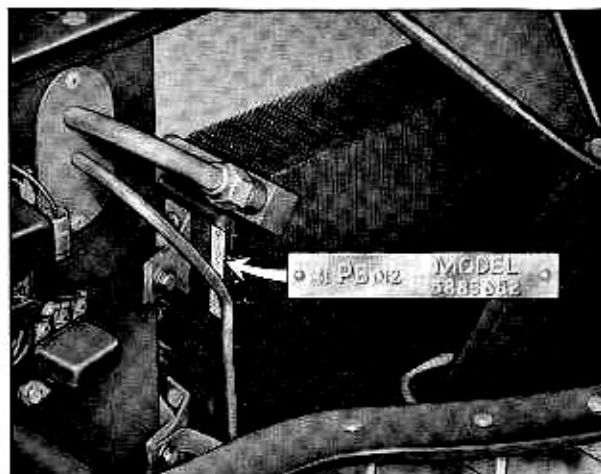


Fig. 1-7 Air Conditioner Condenser Serial Number Location

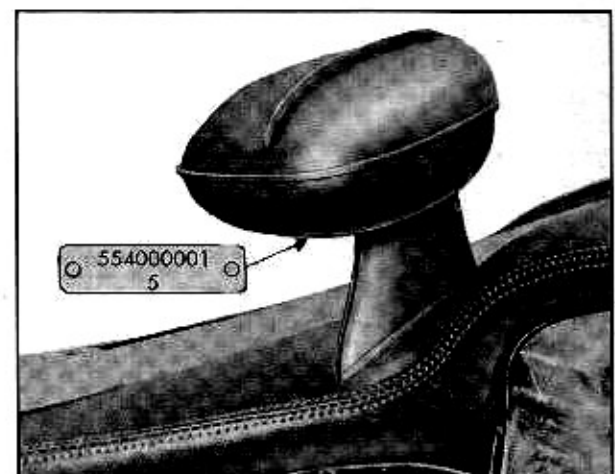


Fig. 1-10 Autronic-Eye Serial Number Location

